

VI. ANNEX:

202311650-J001 Remote Sensing of Forest Resources (JFY 2024)

Inception Report

Each Participant is requested to prepare the Inception Report on the following issues and submit it to JICA Hokkaido along with the application form **by April 12, 2024**. The report should be typewritten in English on A4 size paper (21 cm x 29.5 cm) in single spacing at maximum of 10 pages.

This Report shall be used for selection of participants.

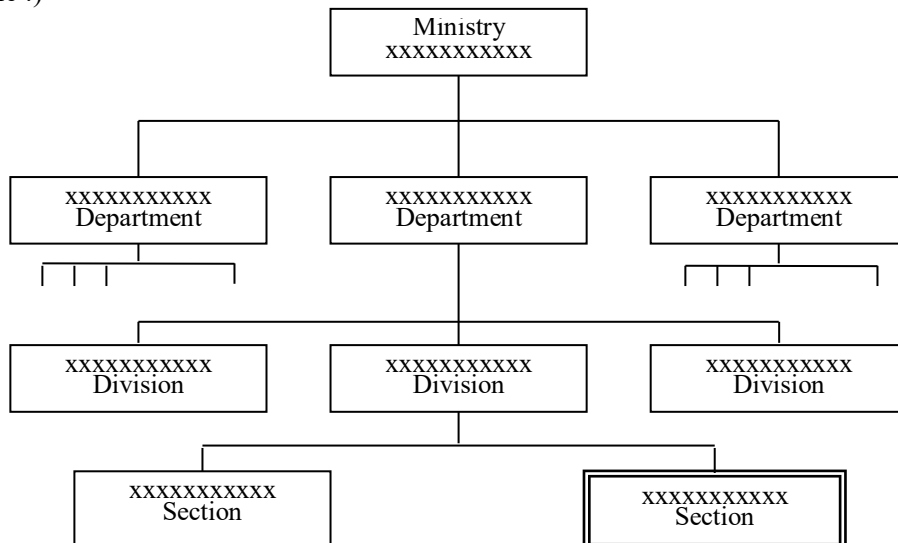
NOTE: Participants are requested to give a 15 minutes presentation and discuss about the situation of forestry management in respective country at beginning of the program by country. It is recommended to use Microsoft Power Point for the presentation.

1. Basic information

Name	
Country	
Organization	
Position	
Period	From _____ to _____
Outline of duties	

2. Outline of the participant's Organization

(Example :)



3. Describe present condition and/or historical trend of forests and forest management with specific figures in the applicant's country, in accordance with the following indicators respectively;

(Choose more than 2 indicators from among the following for the description)

- ① Area and percent of forest by forest ecosystem types
- ② Area and percent of forest specifically for conservation
- ③ Area, percent and growing stock of plantations by species
- ④ Value and volume of production of wood, wood products and non-wood products
- ⑤ Status of legal and institutional framework on forest planning, policy development and coordination with relevant sectors
- ⑥ Status of forest inventory, assessment and monitoring

If there is no national data on the indicators, you can use provincial data or data at the project level as well.

4. Current development of remote sensing of Forest Resources in the applicant's country

5. Problems/constraints on the development of remote sensing in the applicant's country

(Itemize 3 main issues which the applicant directly faces on and describe them)

6. On-going efforts to specifically cope with the problems mentioned in 6. above (If any)

7. The applicant's role in development and application of remote sensing in the country

8. What is your personal challenge that you want to solve through this training program?

9. The applicant's experiences about remote sensing and GIS software specifically

	QGIS	ArcGIS	ERDAS IMAGINE	Ecognition	ENVI	Google Earth Engine	GPS	Others
Version:								
Experience: (How often are you using this in your current duties?)								
Purpose: (What do you use this for?)								
Satellite data: (Describe specific data which you have analyzed)								

10. The applicant's knowledge and interest about remote sensing, GIS and GPS

Items	Detail	Example	Please scale your knowledge by 1 ~ 4 1: I don't know it 2: I know it a little 3: I know it 4: I know it very well	Please check <input type="radio"/> the boxes which you are interested. <small>*You could check more than one</small>
*Example	○○○○	○○○○	1	<input type="radio"/>
	○○○○	○○○○	3	
Measuring	Aerial photos using a drone			
	Collecting field data using mobile device	GPS, smartphone, tablet etc.		
Storing	Downloading satellite imagery and GIS data.			
	Create GIS data	Georeferencing paper maps and tracing them		
	Drone data processing	Ortho rectified mosaic photo and making 3D model		
	Pre/post processing optical satellite images	clipping /mosaicking / reprojecting/ layer stacking satellite imagery		
		Calibration (calculating Reflectance value, atmospheric/topographic correction)		
Pre/post processing microwave satellite images	Calibration (calculating db value (sigma, beta, gamma naught)			
Analyzing	Calculating index	NDVI, NDSI, NDWI		
	Classification (Unsupervised, Supervised classification)	Pixel based classification		
		Object based classification		
	Change detection			
	Spatial data analysis with GIS	Carbon stock mapping		
Mapping with statistical models				
Programming based remote sensing or GIS	Google Earth Engine			
	Other programming language	R, Python, etc.		

11. Knowledge or skills which the applicant intends to acquire from this training program.

(example: knowledge of technical issues about REDD+, skills of using remote sensing software for change detection of landuse in your site)

12. In the applicant's country, what kind of effort/action for REDD+ can be made?

(example: law, policy, finance and aid)

13. Plans/projects which you are likely to be involved in your country after completing the training, if any.

14. Describe the target area which you want to deal with in your action plan in concrete terms. *Please attach the Map below

Area Name:

Longitude and Latitude:

MAP: